



## Specialist frozen food packaging machinery

### Free Site Appraisals

Irrespective of whether or not you currently rely on GIC vertical form fill and seal packaging machinery to keep your production line flowing efficiently, we offer free site appraisals.

Our experienced Applications Engineers will visit your factory, assess your current operating machinery, and advise you of any opportunities to improve operational efficiencies within your business.

To request a free site appraisal, email [info@gic.uk.net](mailto:info@gic.uk.net) or call 01427 611885.

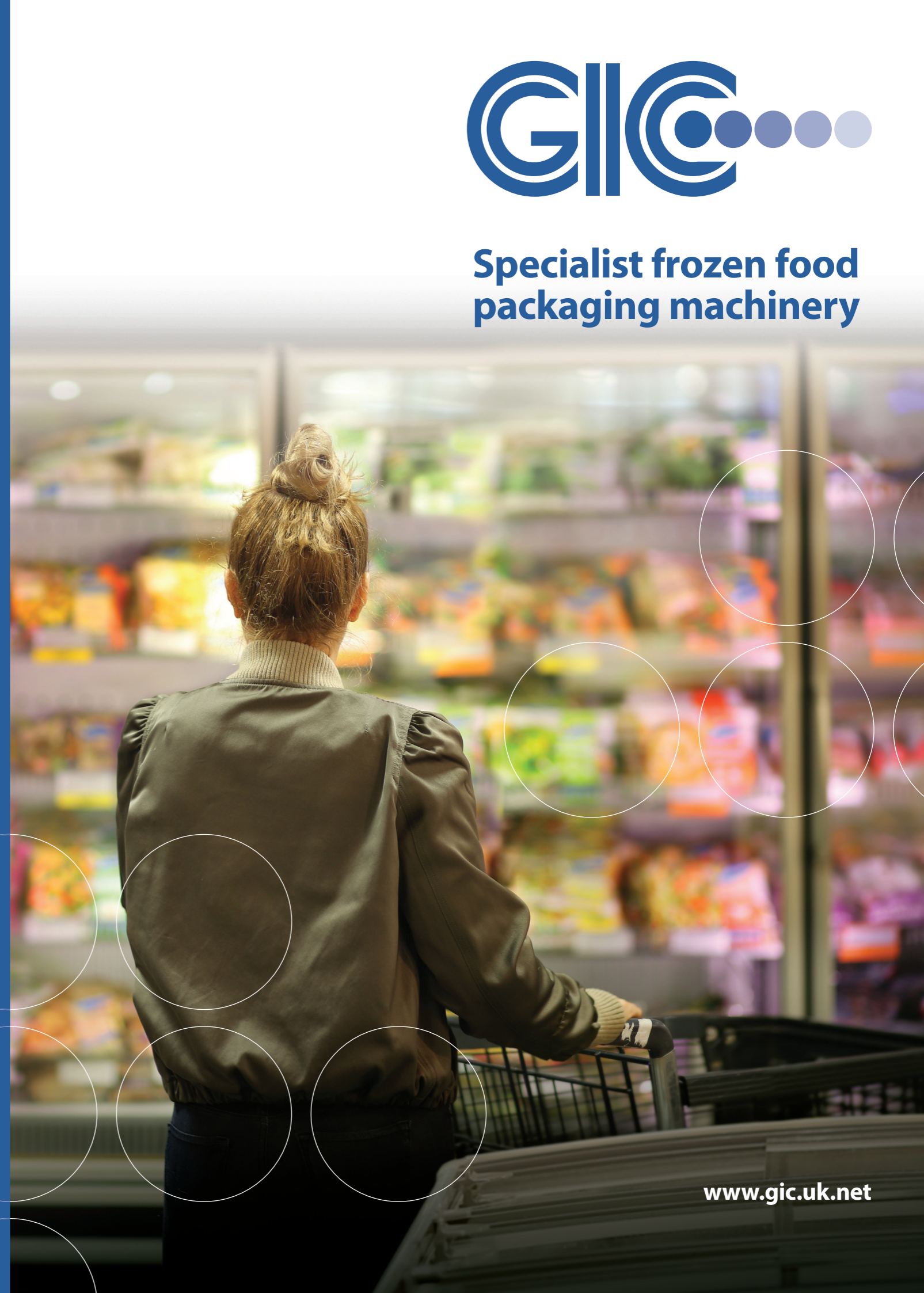


GIC Ltd  
Alpha Works  
Heapham Road Industrial Estate  
Gainsborough, Lincolnshire  
DN21 1RZ

☎ 01427 611885    ✉ [info@gic.uk.net](mailto:info@gic.uk.net)

[www.gic.uk.net](http://www.gic.uk.net)    f in 🐦

[www.gic.uk.net](http://www.gic.uk.net)



# Specialist Vertical Form Fill & Seal Packaging Machinery For Frozen Food Producers

GIC has been designing, installing, and servicing vertical form fill and seal packaging machines for nearly four decades. UK-made to the highest standards, GIC's machines play an essential role in some of the country's largest suppliers of fresh and frozen produce.

GIC machines are designed and built in Gainsborough to exacting standards. We are a gold-level partner in the Rockwell Automation PartnerNetwork™ programme, and all our component suppliers are hand-picked for quality and reliability.

Irrespective of whether you are packing proteins, frozen vegetables, chips or ice lollies, we can design a machine customised to your requirements. We back up our engineering excellence with operator training and comprehensive service and maintenance plans to ensure hassle-free ownership.

Our vertical form fill and seal machines offer the optimum combination of effectiveness, reliability, low cost of ownership and servicing support.

## Key Considerations

If you're considering introducing a new VFFS machine to your line, there are five key things to consider.

## Environment

Packaging frozen foods presents a unique range of operational and engineering challenges. Equipment installed in these facilities must be carefully designed. It must be reliable and efficient yet easy to maintain and operate while withstanding low temperatures and complying with strict hygiene standards.

## Forming Set & Product Handling

VFFS packaging machines operating in frozen food factories often require specially designed forming sets. When developing your machine, our team will consider the type of product, piece weight and size. IQF products can sometimes present problems where the wrapping material needs to be protected during the machine packaging cycle. Similar issues must also be addressed when specifying the product feed system, including a simple linear type weigher, servo volumetric filler, and multi-head weighers.

## Film Type & Feed System

Not all packaging materials are suitable for use in a frozen food factory. Our machines are ideally suited to handle the frozen food sector's packaging materials of choice: recyclable LDPE (polyethylene) materials, which offers high puncture resistance during distribution and in-store display, and high-performance laminate materials often used for premium product applications. Our VFFS machines can be specified with dual sealing systems to handle either type of material.

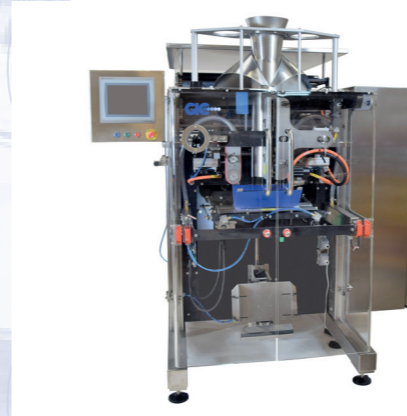
## Secondary & End of Line Packaging

All GIC machines can be fully interfaced to a range of secondary packaging machinery, including cardboard box erectors, filling machinery, and plastic reusable crate systems. This end-of-line plant will also include check weighers, metal detection machinery and pallet loading equipment.

## Non-Contact, Low-Maintenance Pack Sealing

For the vertical seal, we can offer the TOSS HAS system continuous motion machines. This non-contact, low-maintenance system is ideally suited to working at high speeds in frozen food factories and is compatible with LDPE film and other similar films.

# GIC's Specialist Frozen Food Vertical Form Fill & Seal Range



## GIC8100

**MAXIMUM PACK SIZE:** 400 X 500MM

**MAXIMUM SPEED:** 160 PACKS PER MIN

**PACK FORMATS:** PILLOW, GUSSETED, BLOCK BOTTOM, DOY, EUROSLOT AND QUAD

**PACKAGING MATERIALS:** ALL SUITABLE HEAT-SEALABLE MATERIALS, INCLUDING LAMINATES AND POLYETHYLENES. OPTIONAL IMPULSE SEALING.

FULL STAINLESS STEEL AND HIGH-CARE KIT

LABEL APPLICATION

REMOTE DIAGNOSTIC AND SOFTWARE UPGRADES



## GIC4100

**MAXIMUM PACK SIZE:** 400 X 500MM

**MAXIMUM SPEED:** 60 PACKS PER MIN

**PACK FORMATS:** PILLOW, GUSSETED, BLOCK BOTTOM, EUROSLOT AND QUAD

**PACKAGING MATERIALS:** ALL SUITABLE HEAT-SEALABLE MATERIALS, INCLUDING LAMINATES AND POLYETHYLENES. OPTIONAL IMPULSE SEALING.

FULL STAINLESS STEEL AND HIGH-CARE KIT

LABEL APPLICATION

REMOTE DIAGNOSTIC AND SOFTWARE UPGRADES



## GIC3100

**MAXIMUM PACK SIZE:** 250 X 400MM

**MAXIMUM SPEED:** 160 PACKS PER MIN

**PACK FORMATS:** PILLOW, GUSSETED, BLOCK BOTTOM, DOY, EUROSLOT AND QUAD

**PACKAGING MATERIALS:** ALL SUITABLE HEAT-SEALABLE MATERIALS, INCLUDING LAMINATES AND POLYETHYLENES. OPTIONAL IMPULSE SEALING.

FULL STAINLESS STEEL AND HIGH-CARE KIT

LABEL APPLICATION

REMOTE DIAGNOSTIC AND SOFTWARE UPGRADES



## GIC2100

**MAXIMUM PACK SIZE:** 250 X 400MM

**MAXIMUM SPEED:** 90 PACKS PER MIN

**PACK FORMATS:** PILLOW, GUSSETED, BLOCK BOTTOM, EUROSLOT AND QUAD

**PACKAGING MATERIALS:** ALL SUITABLE HEAT-SEALABLE MATERIALS, INCLUDING LAMINATES AND POLYETHYLENES. OPTIONAL IMPULSE SEALING.

FULL STAINLESS STEEL AND HIGH-CARE KIT

LABEL APPLICATION

REMOTE DIAGNOSTIC AND SOFTWARE UPGRADES